

What is a Patient? Codes for Clarity

Frank Oemig, Bernd Blobel
IHIC 2009
Kyoto, Japan, 08.05.2009

About Me

Frank Oemig

Technology Research / Product Management
„Communication Standards and Cross Functionalities“

Agfa HealthCare GmbH
Konrad-Zuse-Platz 1-3
53227 Bonn
Deutschland

T: +49 (0) 228 2668-4781

M: +49 (0) 163 2668-781

Home: +49 (0) 208 3021 7656

eMail: Frank.Oemig@agfa.com



Board HL7 Germany

Implementation & Conformance WG Co-Chair (HL7-USA)

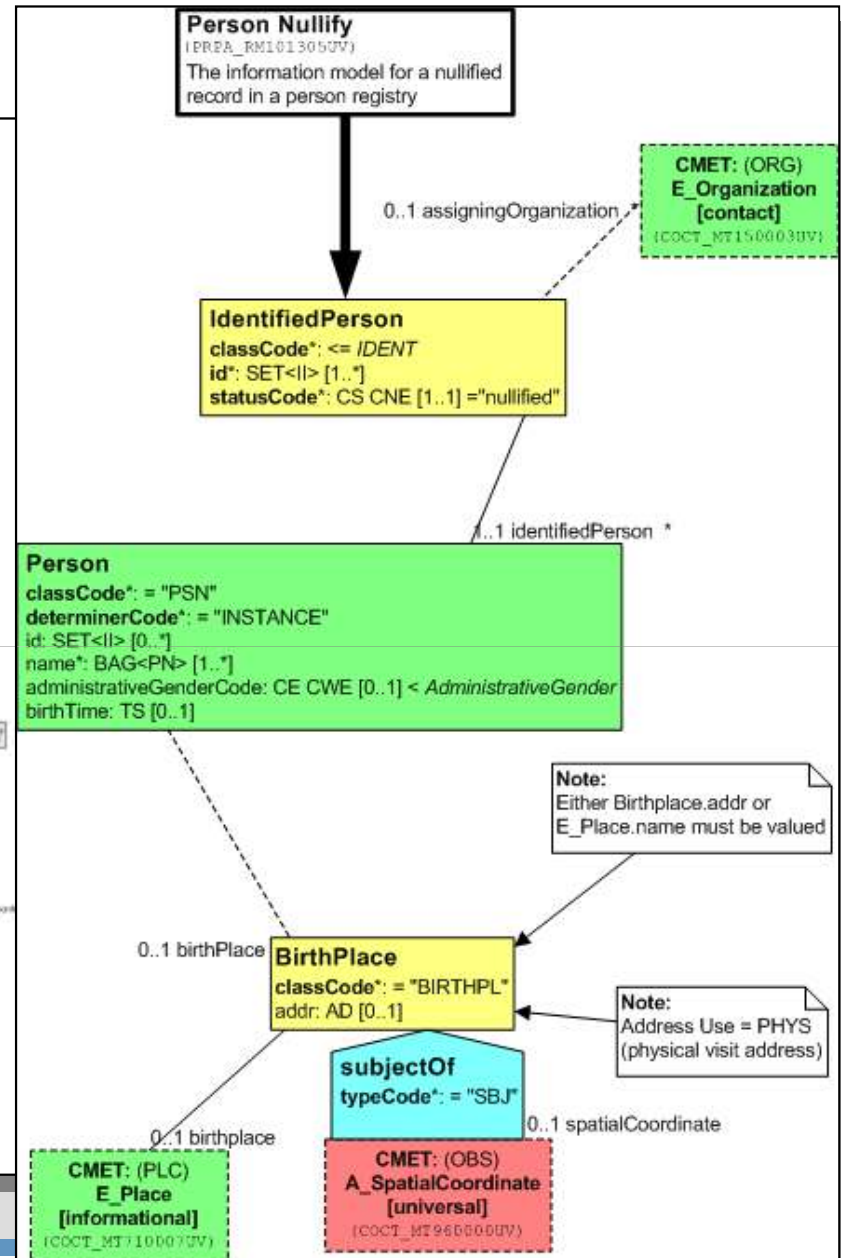
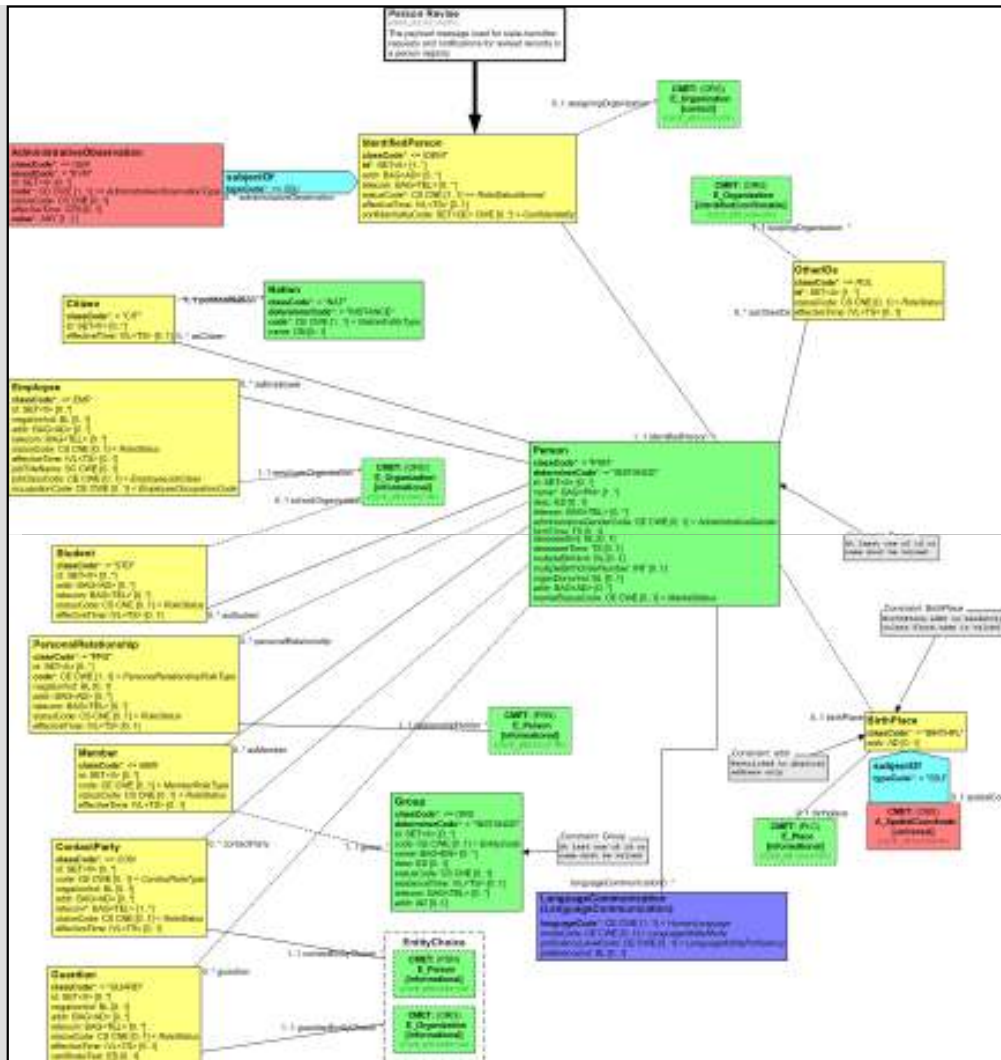
Co-Chair „TC Konformanz & Zertifizierung“ (HL7-D)

Past Int'l HL7 Affiliate Representative to the TSC 2008 (HL7-USA)

Foundation Member + ITI Caretaker (IHE-D)

Foundation Member Competence Network eHealth-Standards

V3 depend on Models!



Definition

- in-ter-op-er-a-bil-i-ty
 - Pronunciation: "in-t&r-"ä-p (&-) r&-"bi-l&-tE
 - Function: noun
 - „Ability of a system (as a weapons system) to work with or use the parts or equipment of another system.“
 - [Merriam Webster Dictionary, 1970]
- interoperability
 - „... is the ability of two or more systems or components to **exchange** information and to **use** the information that has been exchanged.“
 - [IEEE Standard Computer Glossaries, 1990]

syntaktisch

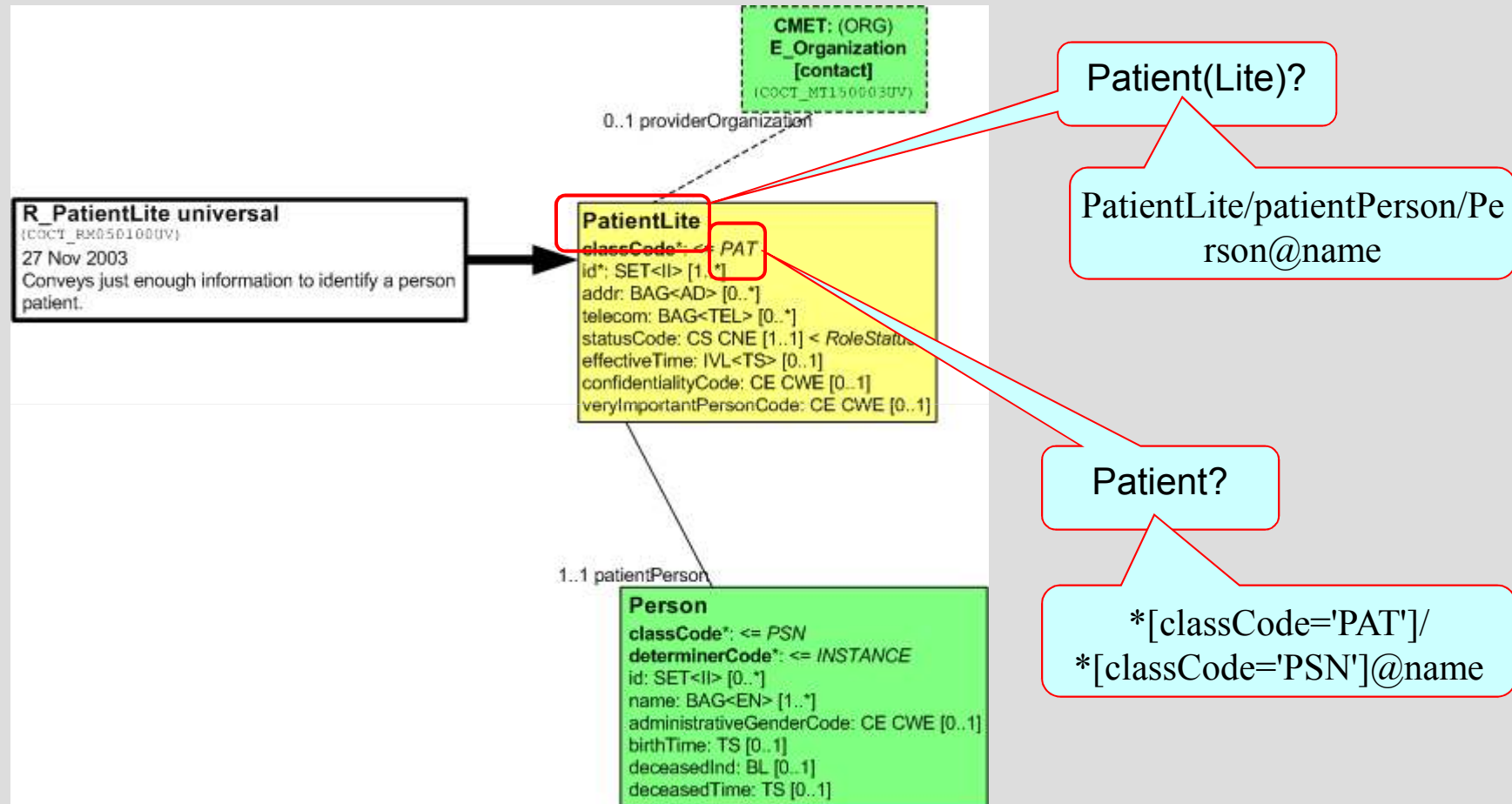
semantisch

Interoperability Level

Interoperability Level	Instances
Organizations/Services Interoperability	Common business process
Semantic Interoperability	Advanced messaging, common information models and terminology
Syntactic Interoperability	Messages, clinical documents, agreed vocabulary
Structural Interoperability	Simple EDI, envelopes
Technical Interoperability	Technical plug&play, signal- & protocol compatibility

after Blobel

Example: Patient CMET Lite (Extract)



Example: Patient CMET Light (Extract)

Expressed Model

```

<PatientLite>
  <id root="2.16.840.1.113883.19.3.2409"
    extension="1-976-245" />
  <statusCode code="active"/>
  <patientPerson>
    <Person>
      <id root="2.16.840.1.113883.19.4.1"
        extension="444-11-4567"/>
      <name use="L">
        <prefix>Ms.</prefix>
        <given>Nancy</given>
        <given>D</given>
        <family>Nuclear</family>
      </name>
    </Person>
  </patientPerson>
</PatientLite>
  
```

Schemas?

Implied Model

```

<X classCode="PAT">
  <id root="2.16.840.1.113883.19.3.2409"
    extension="1-976-245" />
  <statusCode code="active"/>
  <Y>
    <Z classCode="PSN">
      <id root="2.16.840.1.113883.19.4.1"
        extension="444-11-4567"/>
      <name use="L">
        <prefix>Ms.</prefix>
        <given>Nancy</given>
        <given>D</given>
        <family>Nuclear</family>
      </name>
    </Z>
  </Y>
</X>
  
```

No defaults!

Resumee

- Models!
 - Necessary
 - HDF (graphic notation) is correct
- Interpretative approach
 - Although higher efforts
- XML ITS
 - Introduces „wrong“ implementations => validation?
- Good practice:
 - No defaults
 - => uncertainty (XML Schemas are required)!
 - No fixed values
- Precondition for an HL7 Ontology
 - => MIE 2009

Q & A

Thank You
for your Attention!